

# Whisperings

Fabric Collection by *Alex Anderson*



WHIS 456 B



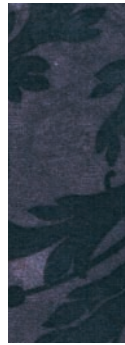
WHIS 456 C



WHIS 456 E



WHIS 456 G



WHIS 456 K



WHIS 456 R



WHIS 456 Y



WHIS 456 Z



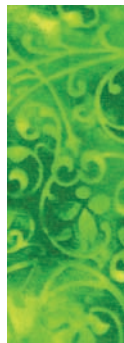
WHIS 457 BG



WHIS 457 G



WHIS 457 F



WHIS 457 G



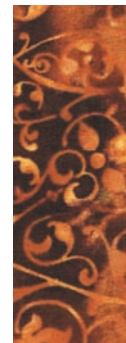
WHIS 457 R



WHIS 457 X



WHIS 457 Z



WHIS 457 ZZ



WHIS 458 B



WHIS 458 C



WHIS 458 E



WHIS 458 J



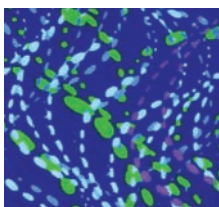
WHIS 458 O



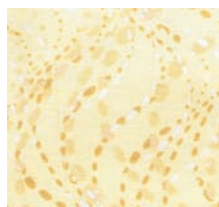
WHIS 458 P



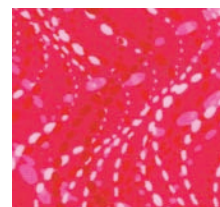
WHIS 458 Y



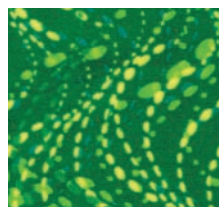
WHIS 459 B



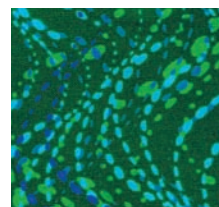
WHIS 459 E



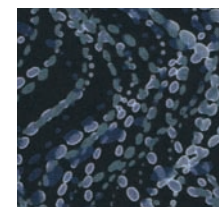
WHIS 459 F



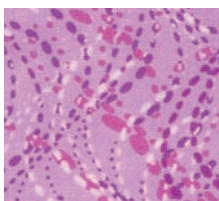
WHIS 459 GG



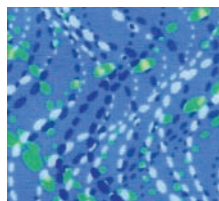
WHIS 459 GT



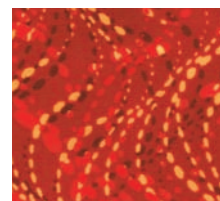
WHIS 459 K



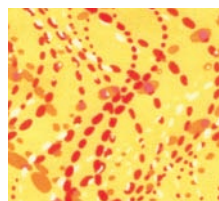
WHIS 459 L



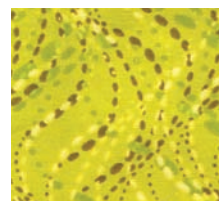
WHIS 459 LB



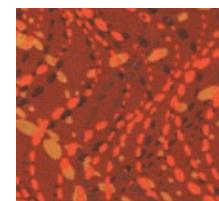
WHIS 459 RO



WHIS 459 Y



WHIS 459 YG



WHIS 459 Z

**P&B Textiles** ♦ 1580 Gilbreth Road, Burlingame, CA 94010 ♦ 800-852-2327

For wholesale orders: 1331 Regal Row, Suite A, Dallas, TX 75247 ♦ 800-351-9087 ♦ [www.pbtex.com](http://www.pbtex.com)



100% cotton ♦ Cold wash & dry ♦ 43"/44" ♦ Colors may vary due to printing process ♦ 9/08

All fabrics shown at 50% scale.