

All A Flutter 54" x 62"

Featuring the "Flutter" collection by Alex Anderson for RJR Fabrics

Yardages:

| | |
|---|----------------|
| Brown-Red Bird Print #1959-01 | 1/2 yard |
| Blue-Green Bird Print #1959-03 | 1 yard |
| Brown Twigs #1963-01 Gold Nest #1961-01 Gold Leaf #1960-01 Orange Dot #1962-01 Coral Dot #1962-02 Neutral Nest #1961-02 Dark Teal Twigs #1963-02 Blue Dot #1962-06 Teal Dot #1962-07 Blue Leaf #1960-05 Purple Nest #1961-04 Green Nest #1961-05 Green Dot #1962-08 | 1 yard total |
| Gray Dot #1962-04 | 1 1/4 yards |
| Gray Leaf #1960-02 | 1 1/4 yards |
| Gray Dots on White #1962-03 | 2/3 yard |
| Blue Dots on White #1962-05 | 7/8 yard |
| Teal Dot #1962-07 | 1/2 yard |
| Purple Nest #1961-04 Red-orange Twig #1963-03 Orange Dot #1962-01 Coral Dot #1962-02 | 1/8 yard total |
| Taupe Leaf #1960-03 (binding) | 1/2 yard |
| Backing: | 3 1/2 yards |
| Batting: | 62" x 70" |

Notions: Thread for piecing, appliqué and quilting.
18" wide lightweight fusible web: 7/8 yard

Designed, pieced and machine appliquéd by Alex Anderson
Quilted by DianneSchweickert

The information in this pattern is presented in good faith. Every effort has been taken to assure the accuracy herein. This pattern may not be reproduced in any form, either electronic or hard copy. The finished project may not be used for mass retail, commercial, or wholesale purposes, markets, or trade shows without written permission.

All A Flutter



 **Alex**
AlexAndersonQuilts.com

All A Flutter

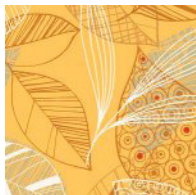
Color Card



Red-Brown Bird Print
#1959-01



Blue-Green Bird Print
#1959-03



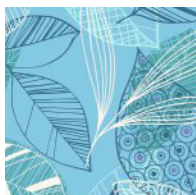
Gold Leaf
#1960-01



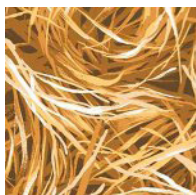
Gray Leaf
#1960-02



Taupe Leaf
#1960-03



Blue Leaf
#1960-05



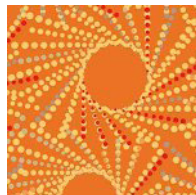
Gold Nest
#1961-01



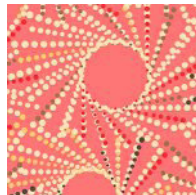
Purple Nest
#1961-04



Green Nest
#1961-05



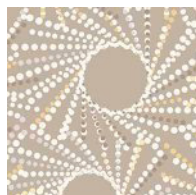
Orange Dot
#1962-01



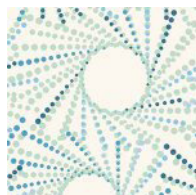
Coral Dot
#1962-01



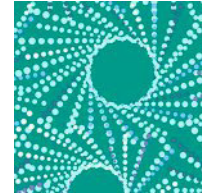
Gray Dots on White
#1962-03



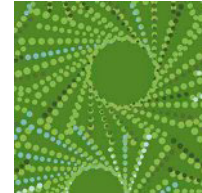
Gray Dot
#1962-04



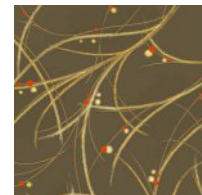
Blue Dots on White
#1962-05



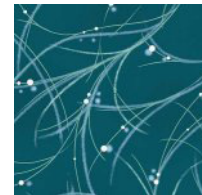
Teal Dot
#1962-07



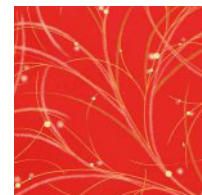
Green Dot
#1962-08



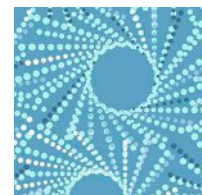
Brown Twigs
#1963-01



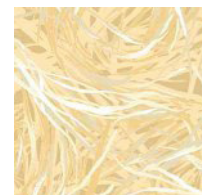
Dk. Teal Twigs
#1963-02



Red-Orange Twig
#1963-03



Blue Dot
#1962-06



Neutral Nest
#1961-02

Cutting:

1959-01 (brown/red bird print);

5 – bird shapes (fussy cut)

1959-03 (blue/green bird print):

11 – bird shapes (fussy cut)

1962-07 (teal dot):

Approximately 250" – 3/8"-wide bias strips

1963-01 (brown twig); 1961-01(gold nest);

1960-01 (gold leaf); 1962-01 (orange dot);

1962-02 (coral dot); 1961-02 (neutral nest);

1963-02 (dark teal twigs); 1962-06 (blue dot);

1962-07 (teal dot); 1960-05 (blue leaf);

1961-04 (purple nest); 1961-05 (green nest);

1962-08 (green dot); 1959-03 (blue/green bird print):

55 – 3 3/4" squares (total)

81 – leaves (total)

1962-04 (gray dot):

10 – 1 1/2" x 44" strips

11 – 2" x 44" strips

1960-02 (gray leaf):

6 – 6 1/2" x 44" strips

1962-03 (gray dots on white):

56 – 2 7/8" squares

6 – 1" x 44" strips

1962-05 (blue dots on white):

54 – 2 7/8" squares

5 – 2 1/2" x 44" strips

1961-04 (purple nest); 1963-03 (dark orange twig);

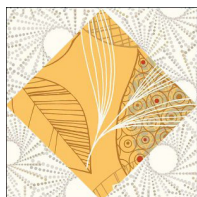
1962-01 (orange dot); 1962-02 (coral dot):

70 – circles (total)

Block A:

Make 28

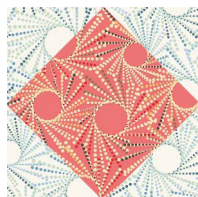
Cut the gray-dot-on-white squares once diagonally.
Stitch triangles to all sides of a 3 3/4" scrappy square.



Block B:

Make 27

Cut the blue-dot-on-white squares once diagonally.
Stitch triangles to all sides of a 3 3/4" scrappy square.



Row A:

Make 3

Combine 11 of Block A and Block B, starting with Block A and alternating them as shown.



Row B:

Make 2

Combine 11 of Block A and Block B, starting with Block B and alternating them as shown.



Sashing Units:

Make 4

Stitch the 2 1/2"-wide blue-dot-on-white strips together end to end with diagonal seams. Stitch the 1 1/2" wide gray-dot strips together end to end with diagonal seams.

Stitch the pieced 2 1/2"-wide blue-dot-on-white strip between the two pieced 1 1/2"-wide gray-dot strips to make a strip set. Cut the strip set into four 44 1/2"-long sashing units.



Combine sashing units, Row A units, and Row B units, alternating them as shown.



Borders:

Stitch the 6 1/2"-wide gray-leaf strips together end to end with diagonal seams. Stitch the 2"-wide gray-dot strips together end to end with diagonal seams.

Sew the pieced 6 1/2"wide gray-leaf strip between the two pieced 2"-wide gray-dot strips to make a strip set.



Side-Border Units:

Make 2

From the strip set, cut two border units 44 1/2" long.

Top- and Bottom-Border Units:

Make 2

From the remaining strip set, cut two border units 52 1/2" long.

Fuse a 3/8"-wide teal-dot bias strip to each border unit. Finish the edges with a small machine blanket stitch. Stitch the side-border units and then the top- and bottom-border units to the quilt.

Appliqué:

Fuse birds, leaves, and berries to the borders, overlapping the seams as desired. Finish the edges with a small machine blanket stitch.

Finish:

Layer, baste, and quilt as desired.

Stitch the 1"-wide gray-dot strips together end to end with diagonal seams. Cut two 62 1/2"-long strips and two 54 1/2"-long strips.

Fold each strip wrong sides together; press. Aligning the raw edges of the strips and the quilt sandwich, sew 62 1/2"-long folded strips to the sides, and then 54 1/2"-long folded strips to the top and bottom of the quilt.

